



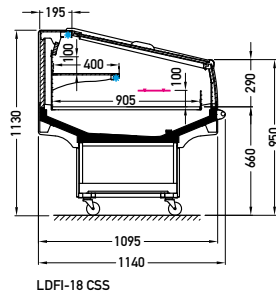
PLUG-IN → PROMOTION

Fiji LDFI-18

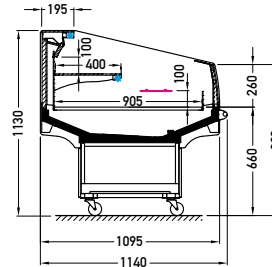
JBG2



Cross sections:



LDFI-18 CSS



LDFI-18 BCA

BCA – low glass or front glass riser | single, bent | fixed
CSS – cover | single, straight | sliding (sideways)



Modules:

1250 1600



Refrigerant:

R290



Standard features:

- working temperature: from 0°C to 2°C
- electrical defrosting
- automatic evaporation of condensate
- electronic controller with temperature indicator
- **energy saving fans**
- exposition: zinc-plated steel, powder coated in white (RAL 9003)
- inox bumper $\varnothing 25$
- colour of the base black (RAL 9005)
- sidewalls glass with black/grey silk screen painting
- on wheels