



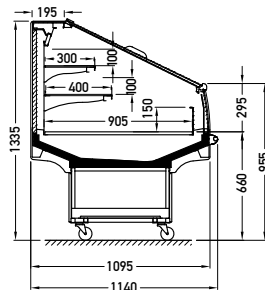
PLUG-IN → PROMOTION

Fiji LDFI-19

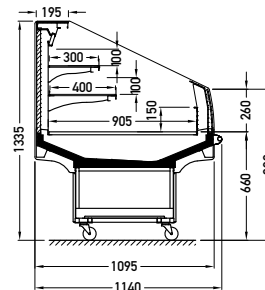
JBG2



### Cross sections:



LDFI-19 CSS



LDFI-19 BCA

**BCA** – low glass or front glass riser | single, bent | fixed  
**CSS** – cover | single, straight | sliding (sideways)



### Modules:

1250 1600



### Refrigerant:

R290



### Standard features:

- working temperature: from 2°C to 4°C for BCA, from 0°C to 2°C for CSS
- electrical defrosting
- automatic evaporation of condensate
- electronic controller with temperature indicator
- **energy saving fans**
- exposition: zinc-plated steel, powder coated in white (RAL 9003)
- inox bumper  $\varnothing$ 25
- colour of the base black (RAL 9005)
- sidewalls glass with black/grey silk screen painting
- on wheels